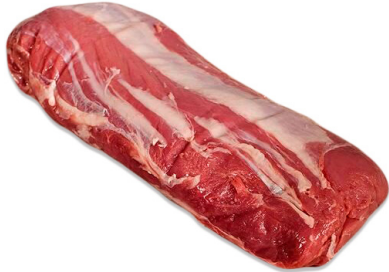


# MilKFed veal (V) ribeye 1VP chilled NL



Product code	567773
EAN code	02356777300002
Selling unit	kg
Country of origin	Netherlands
Brand	Familia
Shelf life (days)	40
Net weight	1700 g
Nutritional claim	natural source of sodium salt
Energy	665 kJ (159 kcal)
Carbohydrate	0.5 g
Protein	19.1 g
Fat	9.2 g

Familia White Veal Entrecote is exceptionally tender and low in fat. The soft and sweet tasting veal Entrecote is best prepared into delicious steaks on a pan or by grilling, or as a whole in the oven. Familia serves veal from around the globe to professionals as well as chefs at home with over 30 years of experience. Due of its exceptional taste and versatility Familia veal is suitable both for dinner parties and everyday cooking.

## Ingredient Statement

Veal (100%)

## Preparation Instructions

Cook the meat until the internal temperature in the thickest part of the meat is +55-58 °C (medium), +60-65 °C (well done).

## Consumer Storage Instructions

Store in cold max. +4°C.